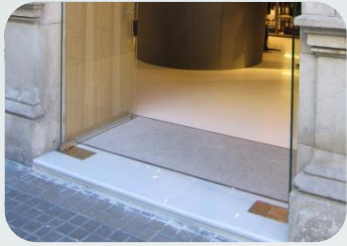


RFID Floor Mat



Product overview

RFID Floor Mat integrates **four high performance UHF RFID antennas** inside a floor mat, for tracking people or objects.

RFID Floor Mat is able to withstand the weight of 3-4 people while maintaining the functionalities of the antennas.

The **antennas** have circular polarization and a radiation pattern characterized by a 40° beam width in one direction and a 90° beam width in the perpendicular direction (curtain beam shape).

This radiation pattern makes this system ideal for RFID **applications** such as loss prevention systems, portals, corridors, doors, etc.

The **material and color** of the mat can be selected, under some limitations.

Options

Texture

RFID Floor Mat can be supplied **with fabric surface or without it**. When supplied without fabric surface, a conventional carpet can be placed over RFID Floor Mat.

with fabric



without fabric



or

Edge thickness

Constant thickness



Low thickness edge



or

Benefits:

- Excellent performance
- Non visible antennas
- Easy to install
- Easy connection to any reader

Applications:

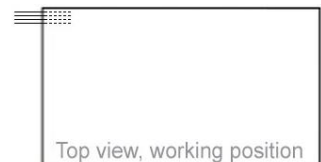
- Loss prevention systems
- People tracking at exhibitions
- Item tracking between backroom and sales floor at retail stores
- Small warehouses
- People and object tracking in general at doors or corridors

Cables exit

Cables exit on the **right**



Cables exit on the **left**



or

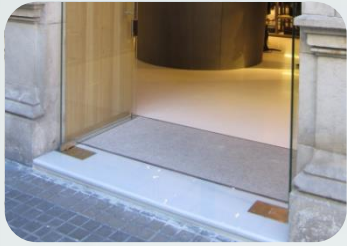
Cables exit through the **edge**



Cables exit **beneath**



or



Cleaning of RFID Floor Mat

When delivered with texture surface, RFID Floor Mat needs to be dry cleaned using products like sprays for upholstery cleaning (sofas, carpets, etc.)

Once sprayed, the carpet should be swept with a soft brush and wiped dry.

Do not clean in laundries.

Specifications

Operating Frequency EU Version	865 - 868 MHz (ETSI EN 302 208)
Operating Frequency US Version	902 - 928 MHz (FCC part 15)
Operating Detection distance	Up to 9.8 ft
Number of antennas	4
Radiation pattern	Fan beam
Gain of each antenna	6 dBi
Beam width of each antenna	40° / 90°
Polarization	Circular
Cables and connectors	4 cables, with SMA female connectors
Color	Several colors available
Texture	Rough or smooth
Available sizes	<ul style="list-style-type: none"> • 39.4 in x 29.5 in • 51.2 in x 31.5 in • 63.0 in x 35.4 in
Height	<ul style="list-style-type: none"> • With fabric: 0.8 in • Without fabric (only plastic): 0.6 in
Weight	<ul style="list-style-type: none"> • Small size: 13.2 lbs • Medium size: 19.8 lbs • Large size: 26.4 lbs
Temperature range	-60°F to +131°F

Radiation pattern of each antenna

